



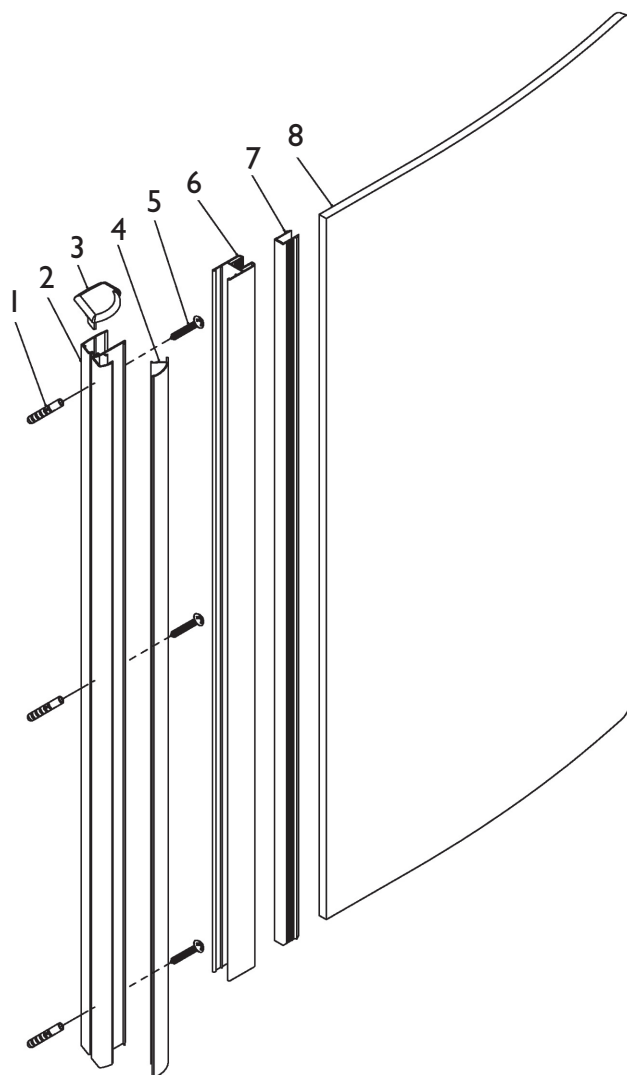
Installation Instructions

Style 1700

Walk In Enclosure

(tc)
bathrooms

We recommend that installation is carried out by a fully qualified competent team of installers.



Part list

1	Wall plugs	x6
2	Aluminium wall profile	x1
3	Chromed plastic end cap	x1
4	Aluminium screw cover	x1
5	30mm screws 4	
6	Aluminium Vertical frame profile	x1
7	Plastic U seal	x1
8	Curved tempered glass	x1

Fittings list

9	15mm self tapping screws	x3
10	3mm drill	x1
11	8mm masonry drill	x1

Essential tools required to complete the installation

(Not supplied) Hammer drill, Pozidrive screwdriver No2 and No1, Flatblade screwdriver med and small, Rubber mallet, Bathroom or sanitary grade silicone sealant, Spirit Level, a metric tape measure, a Pencil and scissors and a helpful assistant!

Prior to assembly

These instructions are for your safety and to help with the correct assembly and installation of the unit.

- Check this is the unit you ordered ensure it is the correct size and hand. The adjustment range is shown on the carton label if you are unsure please call our helpline.
- Check the parts against the parts list and the contents of the fittings box against the fittings list. Do not attempt installation if parts are missing.
- Check the parts and fittings for damage. Do not attempt installation if parts are damaged.
- It is recommended that the enclosure is not fitted to walls which are more than 10mm out of true.
- When handling tempered safety glass care must be taken to ensure it is not knocked or damaged. It is safer to store the glass vertically (not horizontally) leant against a solid structure resting on a suitable surface such as cardboard or carpet.
- The screen must be fitted to walls that are sound and waterproof.
- Use a high quality bathroom or sanitary grade silicone sealant to achieve the best results.
- The fixings and masonry drills supplied are for solid walls such as brick or stone. If you are attempting to install this unit to any other type of wall use suitable fixings and if necessary seek professional advice.

Valve Assembly

Prior to the assembly of the shower unit it is necessary to install the control valve and associated pipe work. It is strongly recommended this task is carried out by a qualified plumber. The following guide lines must be followed.

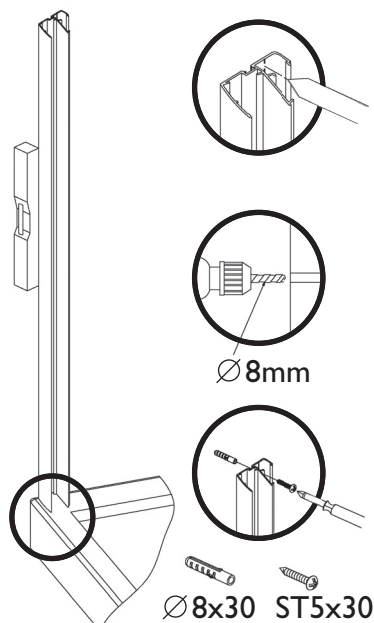
1. The maximum installation depth is 60mm and the minimum installation depth is 50mm from the tile face .
2. The control valve is fitted with 1/2" BSP inlets and outlet. The overhead arrangement is connected to the water control valve via buried pipe work this pipework requires a 1/2 inch fitting and should have its centre 968mm above the upper surface of the tray (the same level as the lower edge of the glass)
3. It is essential that the balancing valves are not covered as they may be required when servicing the valve.
4. The valve will not work if the hot and cold supplies are fitted into the wrong inlets. The valve is marked with red to indicate the hot inlet and blue to indicate the cold inlet. For clarity when looking at the valve from the front the cold enters on the right and the hot enters on the left.

Calibration: The valve can be calibrated provided it has been installed following the guidelines detailed above. The thermostatic valve control knob needs to be removed from the spline of the cartridge. This is accomplished by first removing the chromed plastic cap covering and then removing the fixing screw. The knob will then slide off. The spline must be adjusted manually until a constant temperature of 38°C is achieved. Once this has been achieved then refix the control knob with the lever aligned with the 38°C marking on the face plate.

Shower Unit Assembly

1. Install the shower tray in the desired position and connect the waste outlet pipes. Please refer to the separate manufacturers instructions to ensure it drains correctly and provides a level and stable base for the enclosure. This enclosure is designed to fit the Traditional and Contemporary shower base supplied with this unit Model no RBST WI (LL/HL) (Lh /Rh). (Note LL=Low level, HL=High Level, Lh=left hand, Rh=Right hand)

2. Fit the surface mounting wall profile to the wall using the 8mm drill, wall plugs and 4 x 30mm screws supplied. The position of this profile is dictated by the position of the tray. The glass must be held at one end by the wall profile and the other is held in a slot formed in the tray. The vertical profile must be positioned to hold the glass parallel with the front of the tray. The wall profile must be fixed vertically. The glass is factory fitted into the vertical profile using the u shaped sealing strip. The glass with frame is then



fitted to the wall profile using the 3mm drill and 3 x 15mm screws. The glass is a very heavy object and requires two people to move and position it.

3. The overhead shower assembly can now be fitted to the unit. Please refer to the separate valve assembly diagrams packed with the valve. These diagrams show how the various components are assembled. The overhead shower is connected to the water control valve via buried pipework this pipework requires a 1/2 inch BSP fitting and should have its centre 968mm above the upper surface of the tray (the same level as the lower edge of the glass screen)

Care and use

This screen is made from tempered safety glass. Do not use aggressive cleaning compounds such as scouring powders, cream cleaners, bleaches or solvent based products. Simple soap and warm water is the best cleaning solution.

Shower Valve Fault Finder

All I'm getting is luke warm water, the water isn't mixing properly no matter how the temperature control is set

- Check that the hot feed is connected to the hot inlet and that the cold feed is connected to the cold inlet and not vice versa
- Take out and clean all the cartridges. There may be debris or foreign bodies restricting the water flow
- Check that there is not a leak within the plumbing system

I have constant hot or cold water

- Check that the non-return valves are fully open
- Take out and clean the non-return valves, removing any debris
- Take out and clean the thermostatic cartridge, removing any debris

The water is flowing back up into my water tank

- Remove the non-return valves and check that one the other or both are not stuck open.

I have a poor flow rate through the valve

- Take out the thermostatic cartridge and non-return valves and clean off the debris/lime scale which is blocking the flow of water
- There is not enough water pressure to operate the required unit
- Adjust the non-return valves to fully open
- Clean the connected unit, removing any blockages

The temperature isn't hot enough as is indicated by the faceplate markings

- The thermostat needs re-calibration (refer to the installation instructions)
- Take out and clean the thermostatic cartridge, removing any debris/lime scale obstructing it

I have a pump fitted to the valve, one outlet works and the other doesn't work

- There possibly isn't sufficient gravity water pressure to activate the pump. (Move the pump or replace it with a negative head pump)

All inlets & outlets are BSP thread

PLEASE NOTE: When installing any new products, the plumbing system (pipe work) has to be flushed through in order to clear any foreign bodies or plumbing debris which may cause a blockage within the moving components of that product.



www.tc-bathrooms.com

Traditional Contemporary Bathrooms, 800 Bretton Park Way, Bretton Park Ind Est,
Dewsbury WF12 9BS. Tel: 01924 868 383 Fax: 01924 868 384

Helpline 01924 868383