

Please read this guide fully before commencing installation.

Designer Telescopic Shower Packs



This guide is suitable for the TC Domino, Santanna, Elite, Samba, Viva and Mando Shower Packs.



Our guarantee covers the material structure of any tc bathrooms' product purchased by you against material defects for the lifetime of the products.

Our guarantee is only applicable in the UK and ROI and is subject to certain terms & conditions and exclusions which do not affect your statutory rights.

Full terms and conditions available on request.

Traditional Contemporary Bathrooms Limited, (Company Number 03494394). Registered Office: 800 Bretton Park Way, Bretton Park Industrial Estate, Dewsbury, WF12 9BS. GB VAT No: 656 3640 24.

Tel: 01924 868383 Fax: 01924 868384 Web: www.tc-bathrooms.com

Important Information-

(TC) Products should always be fully inspected and examined at the earliest possible opportunity after purchase. Damage/defects must be reported prior to installation. Failure to do so will be seen as acceptance of quality.

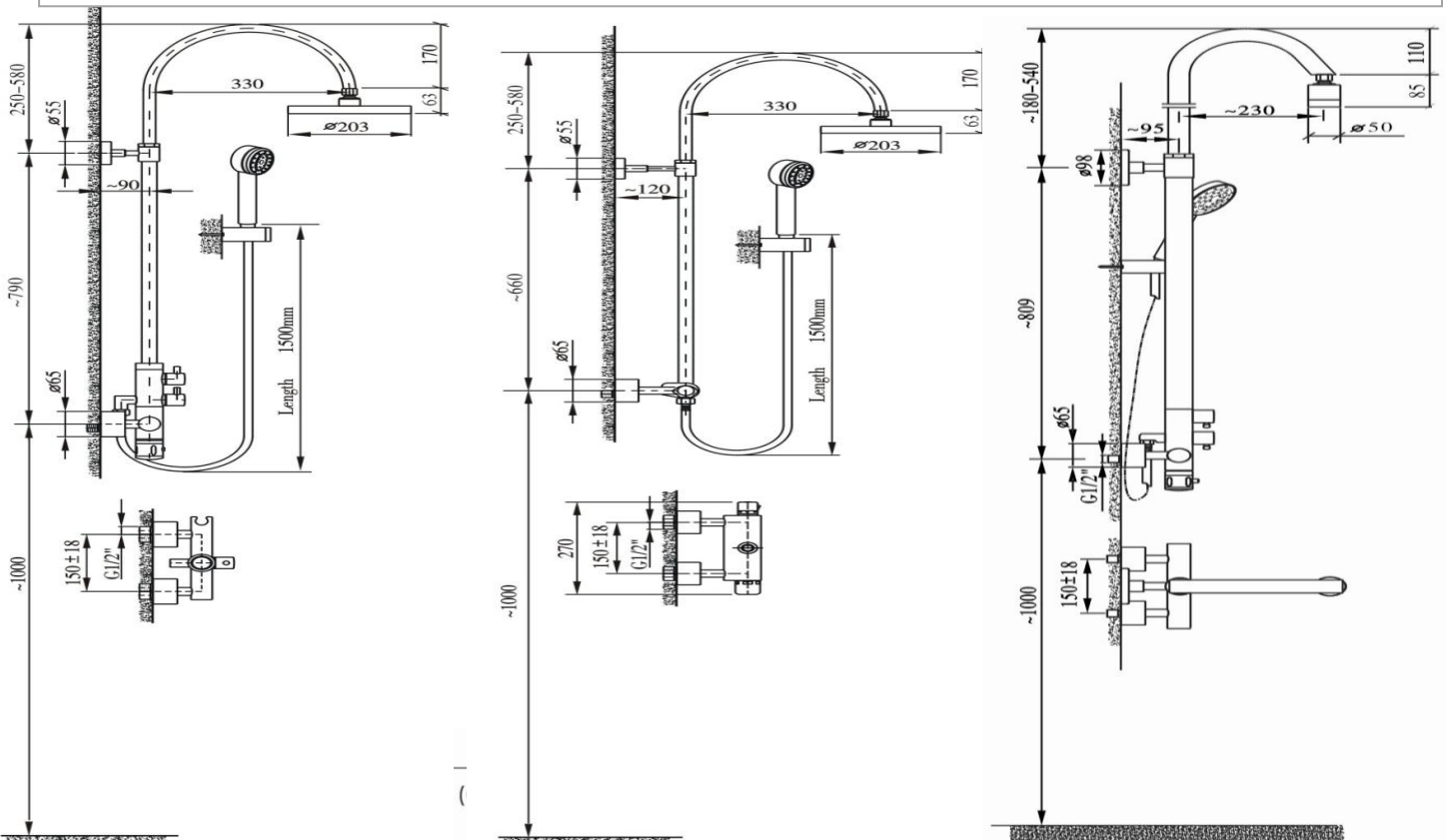
(TC) Recommend that our products should be installed by a competent qualified Bathroom Installer/Plumber. Failure to do so may result in damage to the product, and may result in the invalidation of any warranty or guarantee.

(TC) Recommend all pre-fitted connections/fittings are checked & tested during and after installation to ensure a water tight connection.

Isolating Valves- Suitable isolation valves such as gate valves must be fitted to both hot and cold supplies in accordance with current Water Supply Regulations. Due to their restrictive characteristics, ball type service valves that reduce the bore size are not recommended.

Pressures- TC Telescopic Shower valves are suitable for both Combination Boiler systems and Gravity Fed systems, with a minimum pressure of 1.5 bar and a maximum pressure of 5 bar. For valves with dual functions that can be used simultaneously, such as body jets, a minimum of 3 bar is recommended for satisfactory performance. Hot and Cold Pressures should be balanced to ensure correct and safe operation of the valve.

Gravity Systems Only- These may require a pump to be fitted- your installer should be able to advise you on this prior to fitting. Pumps must be fitted in accordance with the manufacturer's own instructions. TC valves come pre-fitted with check valves in each of the inlet connections. In some gravity/pumped situations these may need to be removed to allow increased initial water flow. This gives better performance where there is very low initial pressure, and allows the flow switches in pumps to open immediately upon first turning on the valve. Consult the pump manufacturer/After-Sales if you are unsure as to whether your particular installation requires this to be done.





ISO 9001:2008
BSI Registration No.: F5552221

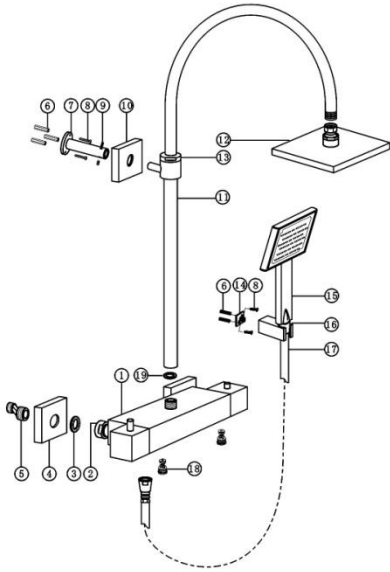
immerse your senses® (tc)TM
bathrooms

Traditional Contemporary Bathrooms Limited, (Company Number 03494394). Registered Office: 800 Bretton Park Way, Bretton Park Industrial Estate, Dewsbury, WF12 9BS. GB VAT No: 656 3640 24.

Tel: 01924 868383 Fax: 01924 868384 Web: www.tc-bathrooms.com

\\VBS\COMPANY\ISO9001\ISSUE1\FEB2012

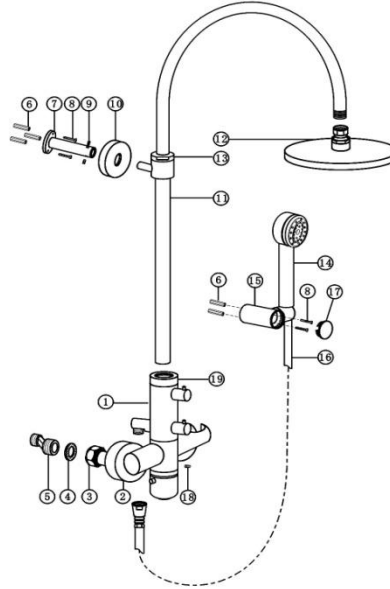
**SANTANNA
 TCHASANCP**



NO.	Description	QTY
1	Main body	1
2	3/4" screw	2
3	Washer	2
4	Cover	2
5	Union	2
6	Rubber bar	5
7	Wall mounting holder	1
8	Fastening screw	5
9	M5X4 screw	2
10	Cover	1
11	Extensible shower pipe	1
12	Shower head	1
13	Fastening screw	1
14	Mounting bracket	1
15	Hand shower	1
16	Shower holder	1
17	150cm shower hose	1
18	Pressure non return valve	2
19	Rubber ring	1

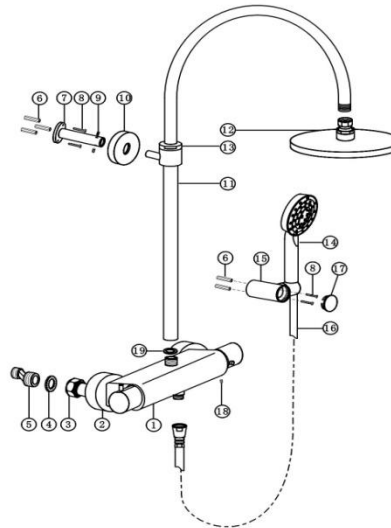
18	Shower holder cover	1
19	Pressure non return valve	2
20	Cover nut	2

**DOMINO
 TCHADOMCP**



NO.	Description	QTY
1	Main body	1
2	Cover	2
3	3/4" screw	2
4	Washer	2
5	Union	2
6	Rubber bar	5
7	Wall mounting holder	1
8	M5X40 screw	5
9	M5X4 screw	2
10	Cover	1
11	Extensible shower pipe	1
12	Shower head	1
13	Fastening screw	1
14	Hand shower	1
15	Shower holder	1
16	150cm shower hose	1
17	Shower holder cover	1
18	M6X8 screw	1
19	Fastening screw	1

**ELITE
 TCHAEIICP**



NO.	Description	QTY
1	Main body	1
2	Cover	2
3	3/4" screw	2
4	Washer	2
5	Union	2
6	Rubber bar	5
7	Wall mounting holder	1
8	M5X40 screw	5
9	M5X4 screw	2
10	Cover	1
11	Extensible shower pipe	1
12	Shower head	1
13	Fastening screw	1
14	Hand shower	1
15	Shower holder	1
16	150cm shower hose	1
17	Shower holder cover	1
18	M6X8 screw	1
19	Rubber ring	1

INSTALLATION PROCEDURE

1. Following the measurements in the appropriate diagram, prepare the water inlet pipe-work, ensuring that the hot supply is to the left and the cold to the right.
2. Ensure the area around the pipe-work is fully sealed.
3. Ensure the feed pipes are properly supported- wall plate elbows are recommended (not supplied) and the outlets are straight. This prevents the possibility of leaks at the unions.
4. Flush out both the hot and cold sides before attaching the valve.
5. Use PTFE tape (not supplied) to fit the unions (part 6) to the pipe-work.
6. Fit the pipe collars (where applicable) to the unions.
7. In gravity fed situations only- remove the check valves from both inlets.
8. Attach the valve to the unions, ensuring that the washer is fitted between the mating faces. Do not over-tighten, as this can damage the washers.
9. Fit the riser support bracket to the wall, using appropriate fixings for the wall type.
10. Fit the riser arm to the valve. Do not over-tighten.
11. Attach the riser arm to the support bracket.
12. Fit the hand-held shower bracket to the wall, using appropriate fixings for the wall type.
13. Attach the shower hose and shower heads, ensuring the sealing washers are fitted.
14. Ensure all pre-fitted connections are tight before testing.
15. Check for leaks. Tighten/seal as required.
16. Cycle the water temperature from cold to hot slowly several times with the valve open.
17. Ensure that the range of temperature is met- if adjustment is necessary then follow the cartridge commissioning guide below.
18. Upon completion please hand these instructions to the end user for guarantee registration and reference purposes.

Cartridge Commissioning

TC Shower valves are factory set to provide a maximum temperature of 38C when the temperature handle position is located at the safety stop. By depressing the small button on the handle, it can then be turned further, allowing higher temperatures to be achieved if desired.

If the desired temperature has not been reached, further adjustment can be made as follows-

1. Remove the temperature control handle by carefully prising off the end cap.
2. Note the position of the handle in relation to the valve.
3. Unscrew the cross head screw that secures the handle to the cartridge.
4. Remove the handle by carefully pulling away from the valve.
5. Refit the handle- a **few turns anti-clockwise in relation to its original position**. This will allow more hot water through before the cartridge reaches its maximum position.
6. Turn the handle anti-clockwise (hotter) to test and repeat steps 4 and 5 until you are happy with the desired temperature.
7. **Please note that TC cannot be held responsible for injuries arising from valves that have been re-set to meet hotter than factory set water temperatures.**

FAULT FINDING AND RECTIFICATION

Symptom	Possible Cause	Action
Water Output is either all hot or all cold, or cold only	Reversed inlet supplies	Check that hot supply is to the left, cold to the right, as viewed from the front (handle side) of the valve.
Water output is not hot enough	The temperature of the hot water from the boiler is too low Hot water flow is too fast	The hot water temperature should be at least 10C higher than the desired output from the valve. Reduce hot water flow
Temperature cycles between hot/cold	Cold water pressure too high/Unbalanced Pressure	Install a pressure reducing valve
Poor Flow Rate	Debris in pipe-work/filters/cartridge/shower head Twisted/damaged shower hose	Check for debris and clear as necessary Check/rectify/replace
Valve not hot enough upon installation	Cartridge has not been commissioned	Commission cartridge as per guide

MAINTENANCE AND CARE

- Do not use excessive force when fitting any TC product.
- Ensure there are no kinks in any pipe-work during and after fitting.
- Use only a mild soap based solution to clean the unit. The use of bleach, ammonia or abrasive agents may damage the unit, and may invalidate any guarantee.
- Please hand these instructions to the end user for future reference.

Our guarantee is provided by traditional and contemporary bathrooms, trading through company number 03494394, whose registered office is at 800 Bretton Park Way, Bretton Park Industrial Estate, Dewsbury, WF12 9BS.

Our guarantee is only applicable in the UK and ROI and is subject to certain terms & conditions and exclusions which do not affect your statutory rights.

What is covered

Our guarantee covers the material structure of any tc bathrooms' product purchased by you against material defects for the lifetime of the product.

At our discretion, we will replace in part or whole, any tc bathrooms' product which is covered by our guarantee. If a replacement tc bathrooms' product is offered by us, but identical goods are no longer available, then we reserve the right to replace the tc bathrooms' product with the nearest equivalent.

What is not covered

Our guarantee does not cover defects arising in respect of:

- (i) fair wear and tear;
- (ii) misuse or abuse;
- (iii) non consumer use;
- (iv) failure to install or utilise the tc bathrooms' product in accordance with any written instructions, good plumbing practice or any legislation;
- (v) electrical failure;
- (vi) moving parts or parts which are likely to perish over time (such as rubber seals);
- (vii) parts which do not form part of the material structure of the tc bathrooms' product;

Labour and other costs incurred by you (including direct and indirect losses) will not be covered by us.

Registering the guarantee

Our guarantee is only effective from the date of registration, which must take place within 90 days of the date of purchase of the tc bathrooms' product.

You can register to guarantee your products by visiting tc-bathrooms.com, click on the Product Guarantee section and COMPLETE ALL SECTIONS of the registration form.

Our guarantee is non-transferable and only applies to the purchaser or original end-user of the tc bathrooms' product.

How to claim under the guarantee

In the unlikely event that you are required to claim, you must first contact the person or place you bought the tc bathrooms' product from. If they deem the fault to be covered under the guarantee, they will contact us with a view to assessing the claim accordingly.

Should an onsite visit be needed, the completion of an onsite visit form will be required, where we will ask you to provide your credit/debit card details.

If as a result of a site visit we reasonably determine that the tc bathrooms' product is not covered by our guarantee, we reserve the right to charge to your credit/debit card a fee of £110.00 to cover the labour costs incurred by us in making the site visit.

TC Bathrooms Lifetime Guarantee Form

To register your guarantee without using the internet, please complete all sections of the form below and post it to:

TC Bathrooms Lifetime Guarantee Registration, TC Bathrooms, 800 Bretton Park Way, Bretton Park Industrial Estate, Dewsbury, WF12 9BS

Your Details

Title: _____ Initial: _____ Surname: _____

Address _____

Postcode: _____

Tel.Number: _____

Mobile Number: _____

Email: _____

Place of Purchase

Company Name: _____

Address: _____

Postcode: _____

Purchase Details

Purchase Date: _____ Invoice Ref. No: _____

Installation Date: _____

Installers Name and Address : _____

Installers Contact Telephone Number: _____