

**Please read this guide fully before commencing installation.**

## Trend Shower Valves



**This guide is suitable for the TC range of Dual and Triple Control Thermostatic Concealed Shower Valves.**



Our guarantee covers the material structure of any tc bathrooms' product purchased by you against material defects for the lifetime of the product.

Our guarantee is only applicable in the UK and ROI and is subject to certain terms & conditions and exclusions which do not affect your statutory rights.

Full terms and conditions available on request.

**Important Information-**

- (TC) Products should always be fully inspected and examined at the earliest possible opportunity after purchase. Damage/defects must be reported prior to installation. Failure to do so will be seen as acceptance of quality.
- (TC) Recommend that our products should be installed by a competent qualified Bathroom Installer/Plumber. Failure to do so may result in damage to the product, and may result in the invalidation of any warranty or guarantee.
- (TC) Recommend all pre-fitted connections/ fittings are checked & tested during and after installation to ensure a water tight connection.
- This guide provides instruction for the installation of (TC) Dual and Triple Control Thermostatic Shower Valves. It is beyond the scope of this guide to provide detailed instructions for the installation of auxiliary products which may be attached to these products. Please consult your installer and any guides which are associated with associated auxiliary items.
- **Isolating Valves-** Suitable isolation valves such as gate valves must be fitted to both hot and cold supplies in accordance with current Water Supply Regulations. Due to their restrictive characteristics, ball type service valves that reduce the bore size are not recommended.
- **Pressures-** TC Trend Concealed Shower valves are suitable for both Combination Boiler systems and Gravity Fed systems, with a minimum pressure of 1.5 bar and a maximum pressure of 5 bar. For valves with dual functions that can be used simultaneously, such as body jets, a minimum of 3 bar is recommended for satisfactory performance.
- Hot and Cold Pressures should be balanced to ensure correct and safe operation of the valve.
- Gravity systems may require a pump to be fitted- your installer should be able to advise you on this prior to fitting. Pumps must be fitted in accordance with the manufacturer's instructions.

**This product and any accessories fitted with it, must be installed in such a way as not to cause water damage during use.**

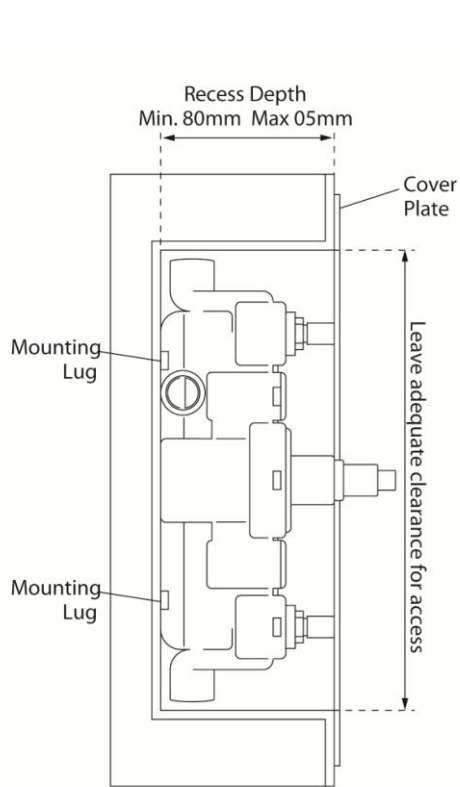


Fig. 1- Handle Removal

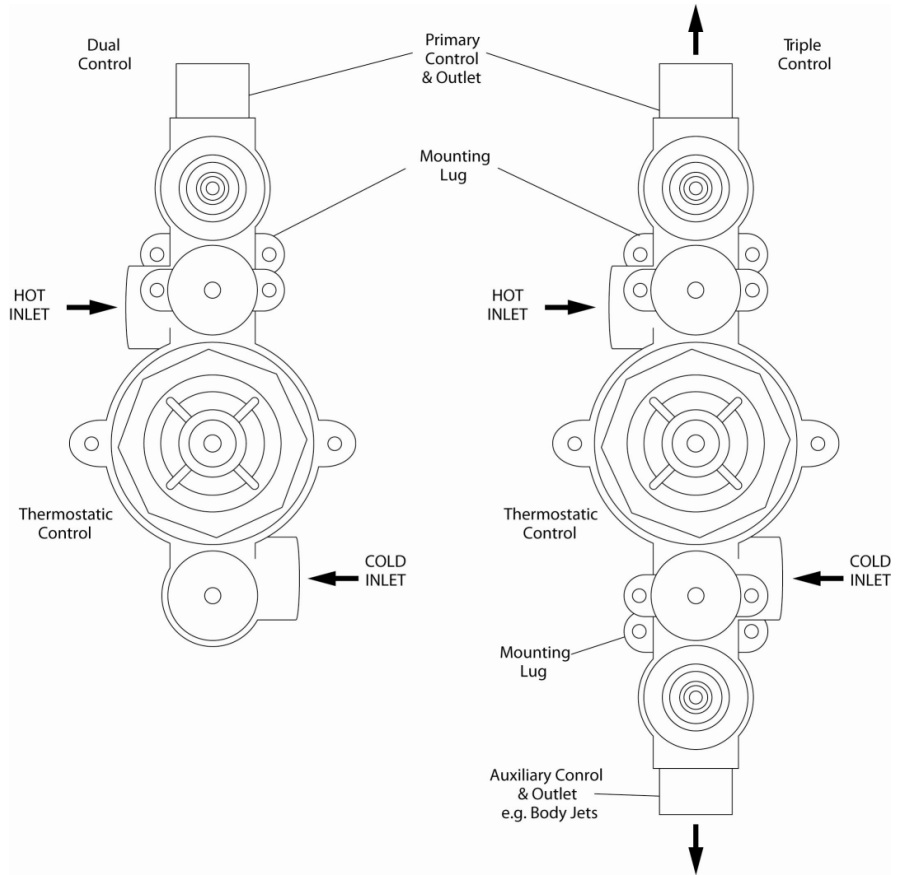
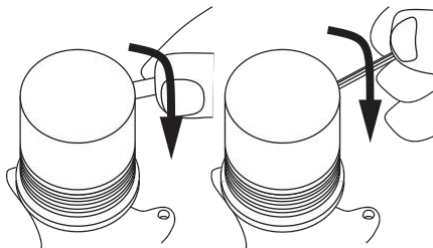
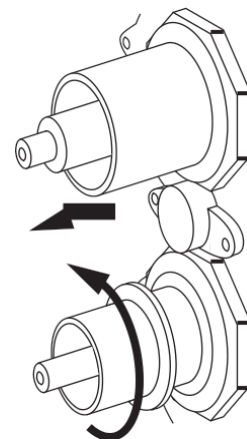


Fig. 2- Retaining Sleeves Removal.



## INSTALLATION PROCEDURE

1. For ease of fitting remove the valves handles (Fig 1.) and retaining sleeves (Fig 2.)
2. Determine the mounting location for the shower valve.
3. Mount the shower valve into the prepared recess in the wall using the mounting lugs cast into the valve body.
4. Ensure the valve is mounted to the correct depth from the finished wall surface. Make sure that there is adequate clearance from the front to access all components and that the cover plate will cover the finished recess.
5. Flush out both the hot and cold pipe-work.
6. Ensuring that the hot supply is to the left and the cold to the right, (as looking from the front, handle side, of the valve,) make the inlet and outlet plumbing connections using a proprietary thread sealant such as PTFE tape (not supplied.)
7. Ensure all connections are tight.
8. Check for leaks. Tighten/seal as required.
9. Re-fit the retaining sleeves.
10. Apply a small bead of silicone behind the front cover plate and fit into position over the retaining sleeves.
11. Re-fit and secure the control handles.

## Cartridge Commissioning

TC Shower valves are factory set to provide a maximum temperature of 38C when the temperature handle position is located at the safety stop. By depressing the small button on the handle, it can then be turned further, allowing higher temperatures to be achieved if desired.

If the desired temperature has not been reached, further adjustment can be made as follows-

1. Remove the temperature control handle by unscrewing the control arm, then loosening the grub screw with an Allen key.
2. Note the position of the handle in relation to the valve.
3. Remove the handle by carefully pulling away from the valve.
4. Turn the control spindle anti-clockwise for hotter, clockwise for colder.

**Please note that TC cannot be held responsible for injuries arising from valves that have been re-set to meet hotter than factory set water temperatures.**

Symptom	Possible Cause	Action
Water Output is either all hot or all cold, or cold only	Reversed inlet supplies	Check that hot supply is to the left, cold to the right (As viewed from the front of the valve.)
Water output is not hot enough	The temperature of the hot water from the boiler is too low  Hot water flow is too fast	The hot water temperature should be at least 10C higher than the desired output from the valve.
Temperature cycles between hot/cold	Cold water pressure too high/Unbalanced Pressure	Install a pressure reducing valve
Poor Flow Rate	Debris in pipe-work/filters/cartridge/shower head  Twisted/damaged shower hose	check for debris and clear as necessary  check/rectify/replace
Valve not hot enough upon installation	Cartridge has not been commissioned	Commission cartridge as per guide

#### MAINTAINANCE AND CARE

- Do not use excessive force when fitting any TC product.
- Ensure there are no kinks in any pipe-work during and after fitting.
- Use only a mild soap based solution to clean the unit. The use of bleach, ammonia or abrasive agents may damage the unit, and may invalidate any guarantee.

#### USEFUL INFORMATION

- For technical assistance please call 01924 868 390, ensuring you have the model name and number to hand.
- To order spare parts please use our website- [www.tc-bathrooms.com/spare-parts](http://www.tc-bathrooms.com/spare-parts)

## Lifetime Product Guarantee

Our guarantee is provided by traditional and contemporary bathrooms, trading through company number 03494394, whose registered office is at 800 Bretton Park Way, Bretton Park Industrial Estate, Dewsbury, WF12 9BS.

Our guarantee is only applicable in the UK and ROI and is subject to certain terms & conditions and exclusions which do not affect your statutory rights.

### What is covered?

Our guarantee covers the material structure of any tc bathrooms' product purchased by you against material defects for the lifetime of the product.

At our discretion, we will replace in part or whole, any tc bathrooms' product which is covered by our guarantee. If a replacement tc bathrooms' product is offered by us, but identical goods are no longer available, then we reserve the right to replace the tc bathrooms' product with the nearest equivalent.

### What is not covered?

Our guarantee does not cover defects arising in respect of:

- (i) fair wear and tear;
- (ii) misuse or abuse;
- (iii) non consumer use;
- (iv) failure to install or utilise the tc bathrooms' product in accordance with any written instructions, good plumbing practice or any legislation;
- (v) electrical failure;
- (vi) moving parts or parts which are likely to perish over time (such as rubber seals);
- (vii) parts which do not form part of the material structure of the tc bathrooms' product;

Labour and other costs incurred by you (including direct and indirect losses) will not be covered by us.

### Registering the guarantee

Our guarantee is only effective from the date of registration, which must take place within 90 days of the date of purchase of the tc bathrooms' product.

You can register to guarantee your products by visiting [tc-bathrooms.com](http://tc-bathrooms.com), click on the Product Guarantee section and COMPLETE ALL SECTIONS of the registration form.

Our guarantee is non-transferable and only applies to the purchaser or original end-user of the tc bathrooms' product.

### How to claim under the guarantee

In the unlikely event that you are required to claim, you must first contact the person or place you bought the tc bathrooms' product from. If they deem the fault to be covered under the guarantee, they will contact us with a view to assessing the claim accordingly.

Should an onsite visit be needed, the completion of an onsite visit form will be required, where we will ask you to provide your credit/debit card details.

If as a result of a site visit we reasonably determine that the tc bathrooms' product is not covered by our guarantee, we reserve the right to charge to your credit/debit card a fee of £110.00 to cover the labour costs incurred by us in making the site visit.

## TC Bathrooms Lifetime Guarantee Form

To register your guarantee without using the internet, please complete all sections of the form below and post it to:

TC Bathrooms Lifetime Guarantee Registration, TC Bathrooms, 800 Bretton Park Way, Bretton Park Industrial Estate, Dewsbury, WF12 9BS

### Your Details

Title:      Initial;      Surname: \_\_\_\_\_

Address \_\_\_\_\_

\_\_\_\_\_

\_\_\_\_\_

Postcode: \_\_\_\_\_

Tel.Number: \_\_\_\_\_

Mobile Number: \_\_\_\_\_

Email: \_\_\_\_\_

### Place of Purchase

Company Name: \_\_\_\_\_

Address: \_\_\_\_\_

\_\_\_\_\_

\_\_\_\_\_

Postcode: \_\_\_\_\_

### Purchase Details

Purchase Date: \_\_\_\_\_ Invoice Ref. No: \_\_\_\_\_

Installation Date: \_\_\_\_\_

Installers Name and Address : \_\_\_\_\_

\_\_\_\_\_

Installers Contact Telephone Number: \_\_\_\_\_

\\VBS\COMPANY\ISO9001\ISSUE1\JAN2012